



# *Omneec's Oasis*

*A Place in Harmony with the Universe*

∞ Project ∞



# Omneec's Oasis

## *A Place in Harmony with the Universe*

*“This project does not represent a certain religion or teaching, but encompasses all believes and cultures. It is a place which carries the spiritual headlines ‘You are not judged here, but accepted’ and ‘Unconditional Love’. Places like this will be needed due to the transformation of our societies.” (Omneec Oneec)*

### **Omneec’s Oasis - A Place in Harmony with the Universe**

Text and illustrations by © Anja Schäfer, 2006-2016

Non-commercial copying and sharing of these texts as well as citing is welcome. Thank you for your acknowledgement of the source.

Internet: [www.omneecsoasis.org](http://www.omneecsoasis.org)

eMail: [office@omneecsoasis.org](mailto:office@omneecsoasis.org)



*Omneec's Oasis*

## *Concept Description and Visionary Texts*



*Omneec's Oasis - Main Building - Illustration II (2015)*



*Omneec's Oasis*



*The Vision*



*Omneec's Oasis - Main Building - Illustration I (2006)*





*Omneec's Oasis*



*The Vision*

### ***Oasis Project - The Vision***

The Oasis is a place in complete harmony with nature.

In the Oasis, people may live, work and stay as long as they'd like. The Oasis is open 24 hours a day for visitors and people in need of a place to rest and recover.

In the Oasis, peace and calmness rule as a natural state. There are also a variety of events taking place on a regular basis. Everything here is voluntary, but there are some simple rules and guidelines.

The Oasis is a place of balanced giving and taking. Every visitor, guest and inhabitant contributes in whatever way is possible and comfortable for them. The inner order of the Oasis is maintained through the natural intuition of the people there and through meetings of the people who are living there and wish to take part. In these meetings, all points are discussed which are to be addressed, as well as important decisions made.

In the Oasis, the „Communication of the Heart“ is relied upon. That means, every person may speak what is on their mind while the others listen.

A central theme of the Oasis is „You are not judged here“. Love and acceptance replace judgement and criticism.

The foundation of the Oasis is the Earth itself. Life in the Oasis pulses in harmony with the Earth and is protected and supported by it. The care and maintenance of the Oasis is also in harmony with nature.

The place as a whole offers room for peace, healing, creativity, and learning.

The gardens are full of beauty and are used for the planting and cultivation of fruits and vegetables, flowers and herbs.

The core of the Oasis are people who are living naturally and in harmony with the ideals upon which the Oasis is based. All subjects concerning the daily life in the Oasis are directed by this core. No matter what question emerges, it is discussed by the core; that means the heart of the Oasis is asked, just as every individual in the Oasis asks their own heart for guidance. For those who don't ask the heart for guidance first, it is possible they may therefore not feel comfortable at the Oasis for any extended time, due to a lack of overall resonance.



*Omneec's Oasis*



## *The Vision*

The heart of the Oasis is a powerful energy that is in harmony with the Earth and the movement of our solar system. This place is a safe place in the holistic sense, in that it grows and develops in accordance with the nature of the times.

The essence of the Oasis is its harmonious energy in which healing, happiness, and peace can be.

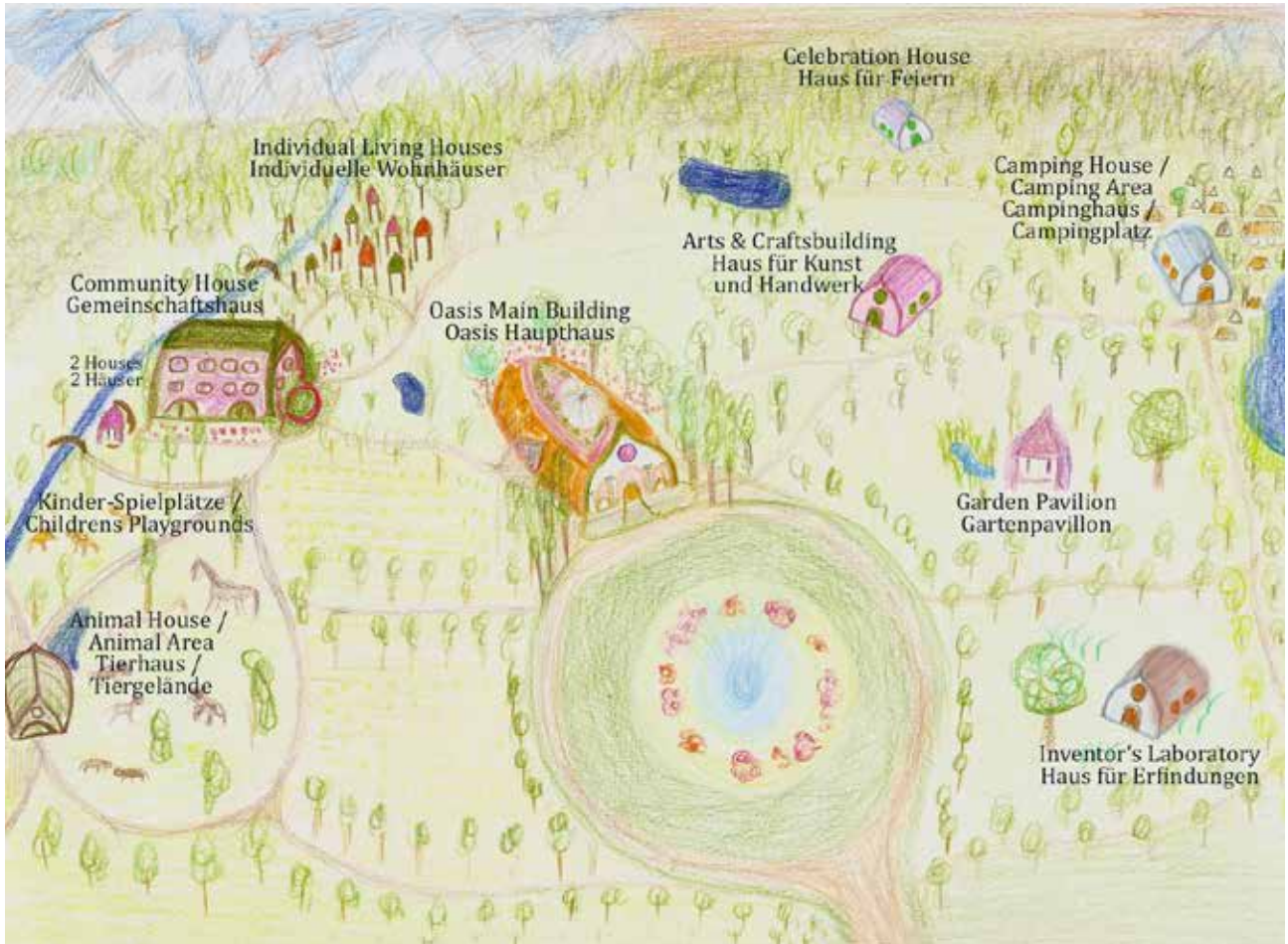
The Oasis is built on an acupuncture point of the Earth's surface. Other places like this already exist, are being built right now, and with more to come in the future. All these places of peace, healing, and harmony are connected along the Earth's meridians. In this way, a powerful net of protection is built which also stabilizes the Earth while helping to raise its vibrations.



# Omneec's Oasis



## The Grounds



Omneec's Oasis - The Grounds



*Omneec's Oasis*



*The Grounds*

### ***Project Oasis - The Grounds***

The place where the Oasis is situated is spacious and open, but comfortable.

The Oasis consists of a main house, a living house, apartments/bungalows, a place for animals and a camping area<sup>1</sup>.

All houses are connected by foot paths which are mostly covered by sand.

Between the houses are gardens and open green spaces.

There is a lake near the camping area. A small river flows close by the living house, the animal house and the bungalows.

In front of the main house there is a large circular patch of grass with flowers surrounding a fountain.

There is a parking area before the entrance to the Oasis property. The Oasis itself remains auto-free. The only cars and big machines in the Oasis are the ones that are necessary for work or transportation purposes.

The Oasis is only accessible to the world of streets in the front. Nature surrounds the Oasis otherwise, including forest, fields, and open space. One can see mountains rising up in the distance.

All the houses are built in an organic style with an emphasis on curves not corners, and this style is continued inside the buildings. In this way, the buildings create a soft and friendly environment. There are also columns and covered areas outside.

The main building of the Oasis is beautiful. Wide gentle steps lead up to the main entrance here. The outside is constructed with columns and invites one to relax and enjoy the view looking out over the round of green and fountain bubbling in the center as well as to feel the peace emanating from the environment.

The entrance is high and rounded. As far as the weather allows it, the doors are open.

There is a big circular mosaic of colored glass above the main entrance door. Above it are letters that convey the meaning of the heart of the Oasis. Underneath is the word Oasis written in the same style of letters. This script used here are thought forms which transcend the meaning of written language.

---

<sup>1</sup> The Grounds have already been altered and extended, see „Update No. 4: Extensions Oasis Grounds“ on page 14





*Omneec's Oasis*



## *The Grounds*

Inside the Oasis is a round area decorated with plants and water. Above, the space is open with many plants growing, some all the way to the roof. The roof is open but can be closed during cold or wet weather as necessary.

The main house is three stories. On the first floor left is a café/restaurant with an al fresco area. To the right, also opening to the outside, is a business with books and crystals and all kinds of related accessories. Integrated into the business is a large area for reading and relaxing where drinks and fruit are freely available.

To the back from the main entrance area is a larger room with a stage for the presentation of various events and music.

All together the interior of the Oasis is flooded with light, full of wonderful plants, and water bubbles gently all around. There is a sense of peace and lightness. A great staircase sweeps up into the second floor.

There is an open landing full of plants that also allows a view onto the main first floor. It is very open and light. The large plants and trees grow from below on the first floor, right past, and up to the roof.

Here are many „color rooms“. The „color rooms“ are variously furnished and each in a different lovely color. For example, there is a purple room, which is completely purple and in which there are magnificent amethysts as well as a few pictures and decorations that go with the purple theme.

Furthermore, there is a blue room, a green room, an orange room, as well as a yellow room, a turquoise room, a pink room and finally the rainbow room. Unfortunately, not all colors and shades can be represented in the physical, so the core has to decide which colors are currently on display.

The color rooms are available for creative and healing purposes but also open for simple enjoyment. All the rooms have some sort of outer access, like a balcony, which usually includes a lovely view.

Another set of beautiful stairs leads up to the top floor and meditation room.

The meditation room is a dome made of white color, glass, and light.

Here the meetings of the core of the Oasis take place, as well as regular meditations. At all other times, this special room is open for the enjoyment of all.

There is a terrace on the roof full of plants and offering many seating areas.



# *Omneec's Oasis*



## *The Grounds*

Besides the main entrance, the main house of the Oasis has three other doors in each of the cardinal directions.

To the left and behind the main house one finds the big living house.

On the ground floor of the living house is a kitchen, dining room, an office, and a large walk-in pantry.

In the upper three floors there are numerous rooms, where permanent citizens of the Oasis as well as guests are living.

Behind the big living house are bungalows. The bungalows are round and sitting on stilts.

All rooms and bungalows can be decorated and adjusted to meet the needs of the people living in them.

To the left and the front of the main house, is a garden where food is grown as well as a house and place for animals.

There are a variety of animals that call the Oasis home, and how their living area looks can be changed or adjusted according to needs.

The people communicate with the heart of the animals so that their wishes and needs are met as well as those of the people.

To the right of the main house is a camping house and area on the shore of a small lake. There are many trees.

The camping house contains all the necessities for living in the camping area. This area of the Oasis is available for all those who enjoy living in a tent or camper or otherwise enjoy living close to nature.

The entire Oasis is crisscrossed by footpaths which connect all houses with each other and lead in various directions into nature.

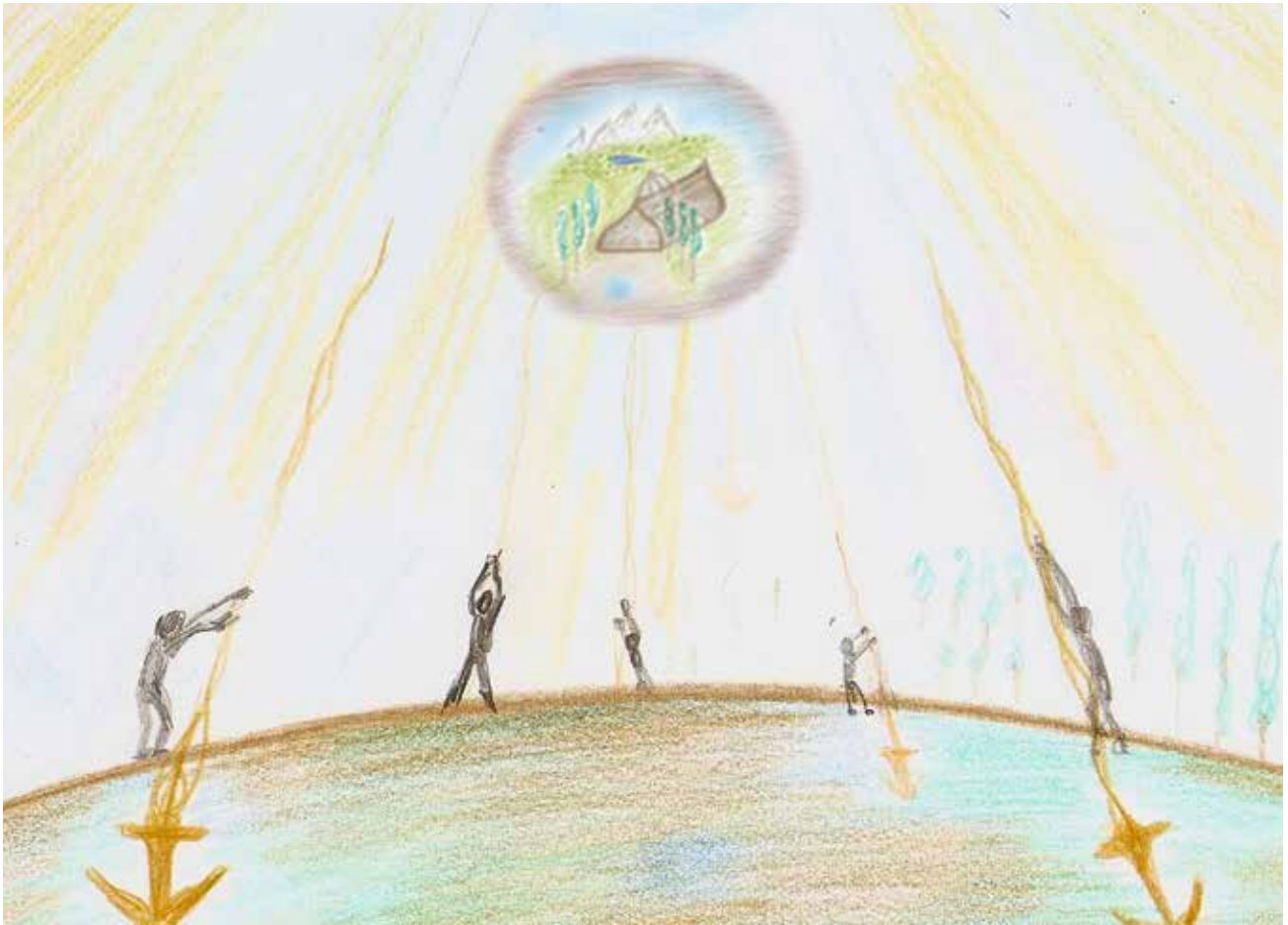
This description of the Oasis represents just one possibility. The picture is not fixed but changeable according to the emotions, thoughts, and actions of the people whose vision its realization reflects.



*Omneec's Oasis*



*The Realization*



*Omneec's Oasis - The Realization*



*Omneec's Oasis*



*The Realization*

### ***Project Oasis - The Realization***

The realization of the Oasis is possible.

According to the motto „Imagination is the key to creation,“ everything can be realized that one can imagine.

The Oasis is a place of the heart and of peace. It emerges through the power of imagination of many peaceful hearts. The attention of the people who love this place enable it to become reality.

No person alone could ever create the Oasis, even if the financial means were available. The Oasis is a project that results from combined energies and efforts. All the people who dream of this place, who long for this place, who wish for this place, send their energy into the heart of the Oasis. Out of the heart this project grows and gathers to it the necessary material. In this way the Oasis is grounded and realized. It is literally created and takes root naturally.

The spirit of the Oasis exists as a vision of planet Earth itself. The Earth is a beautiful planet that lovingly supports all life forms. The Earth is longing for peace and appreciation through its citizens. The development and being of places like the Oasis is wished.

The spirit of the Oasis exists in the ether and is received by numerous people. From here the Oasis finds entrance through the heart.

These people are filled with a vision like this, dream of it, and imagine a place and life which they fill with their joy and energy.

The next step towards realizing this vision is sharing it with other through words and pictures.

It is for this reason that this website was developed.

Step by step the hearts of the people who share this vision are connected and exchange information contributing to its further growth and development.

The heart of the Oasis collects more and more energy and starts to pulse in resonance with the Earth and therefore continues to grow.

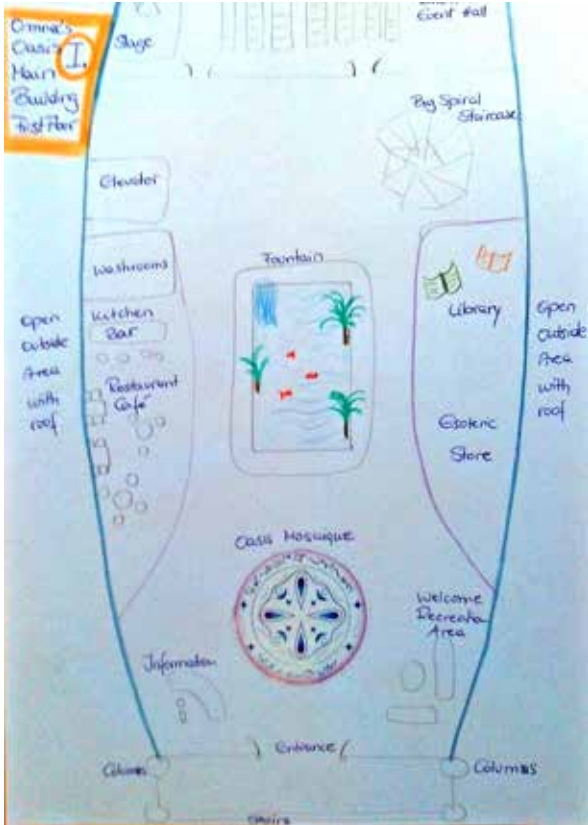
Somewhere, sometime the Oasis is real, lives on the Earth in the physical dimension and is connected with other places of this kind.

This net contributes to the development of Earth towards a light and loving vibration that is harmonious with the Universe.

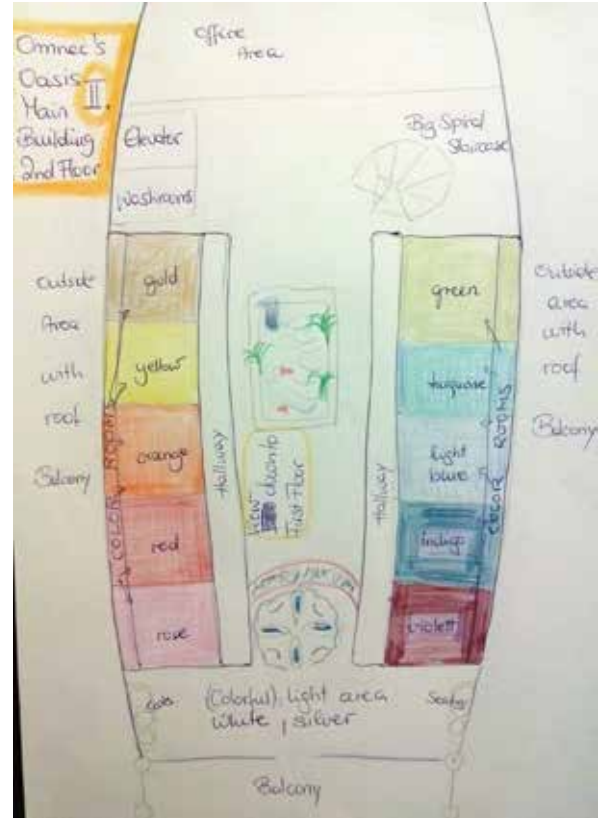




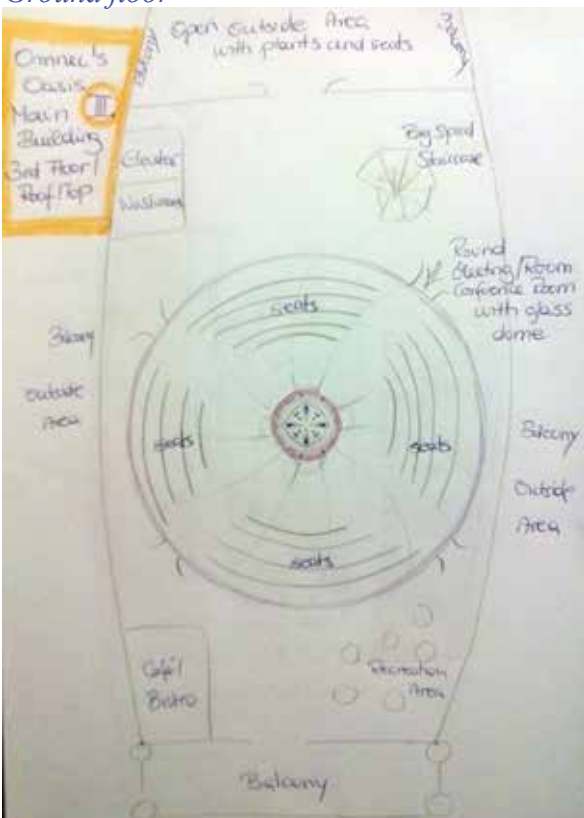
Update No. 1: Floor Plans Main Building  
Anja Schäfer, March 2015



Ground floor



First floor



Upper floor

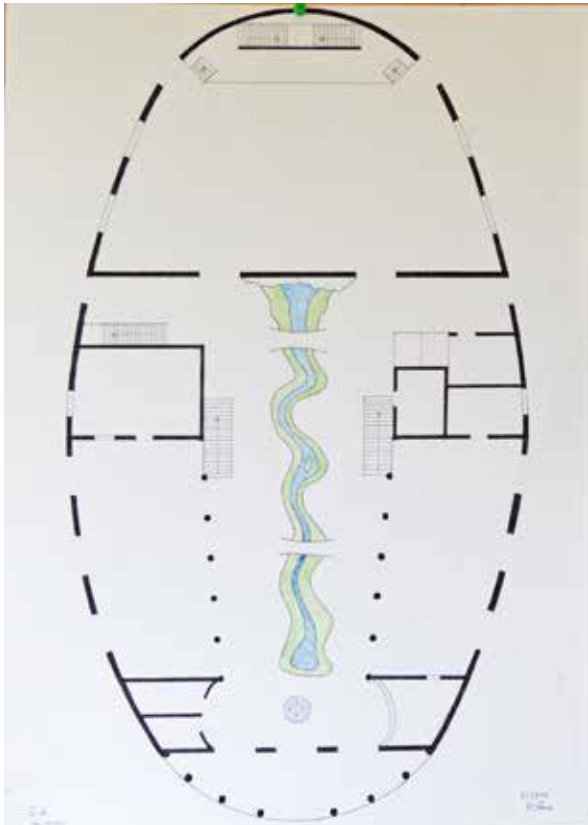
Based on these drafts, Wolfgang Schrader created scaled illustrations and a first model (see following pages „Update No. 2“ and „Update No. 3“).

In the course of these considerations, an intermediate floor for offices emerged.

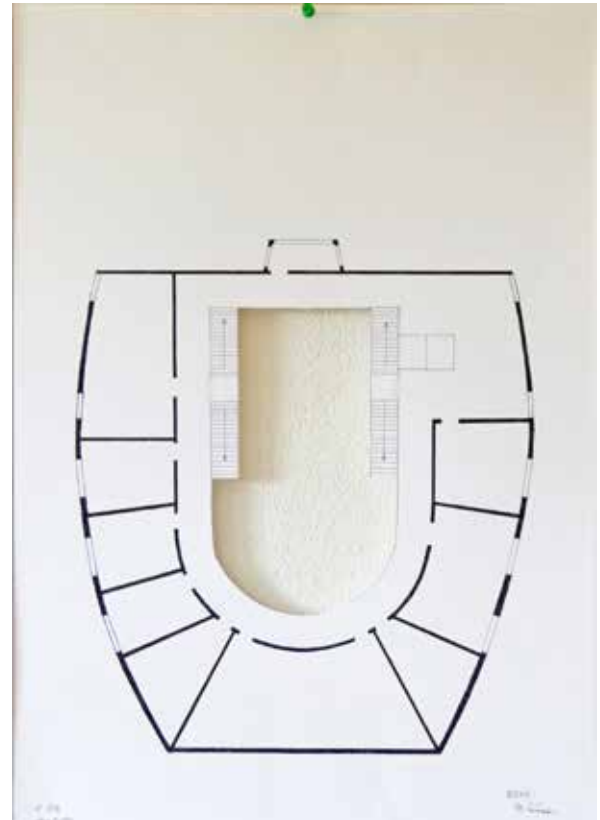
Furthermore, the original color rooms were changed to geometrically differently shaped rooms where colors can change by using modern technologies.



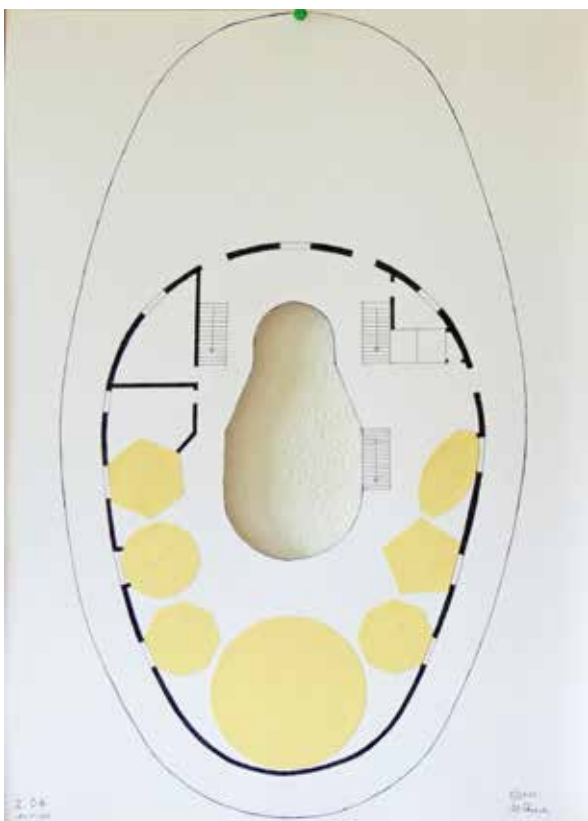
*Update No. 2: Floor Plans Main Building  
Wolfgang Schrader, May 2015*



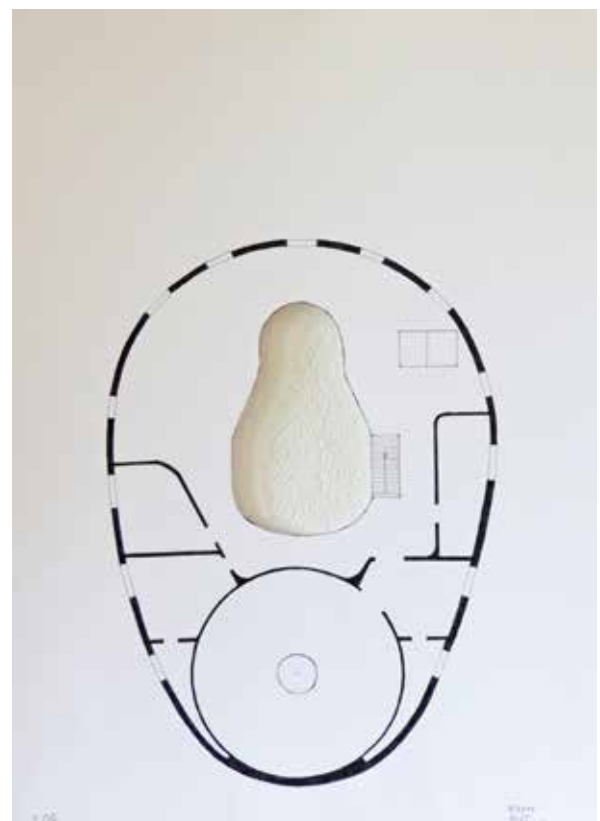
*Ground floor*



*First floor*



*Second floor*



*Upper floor*



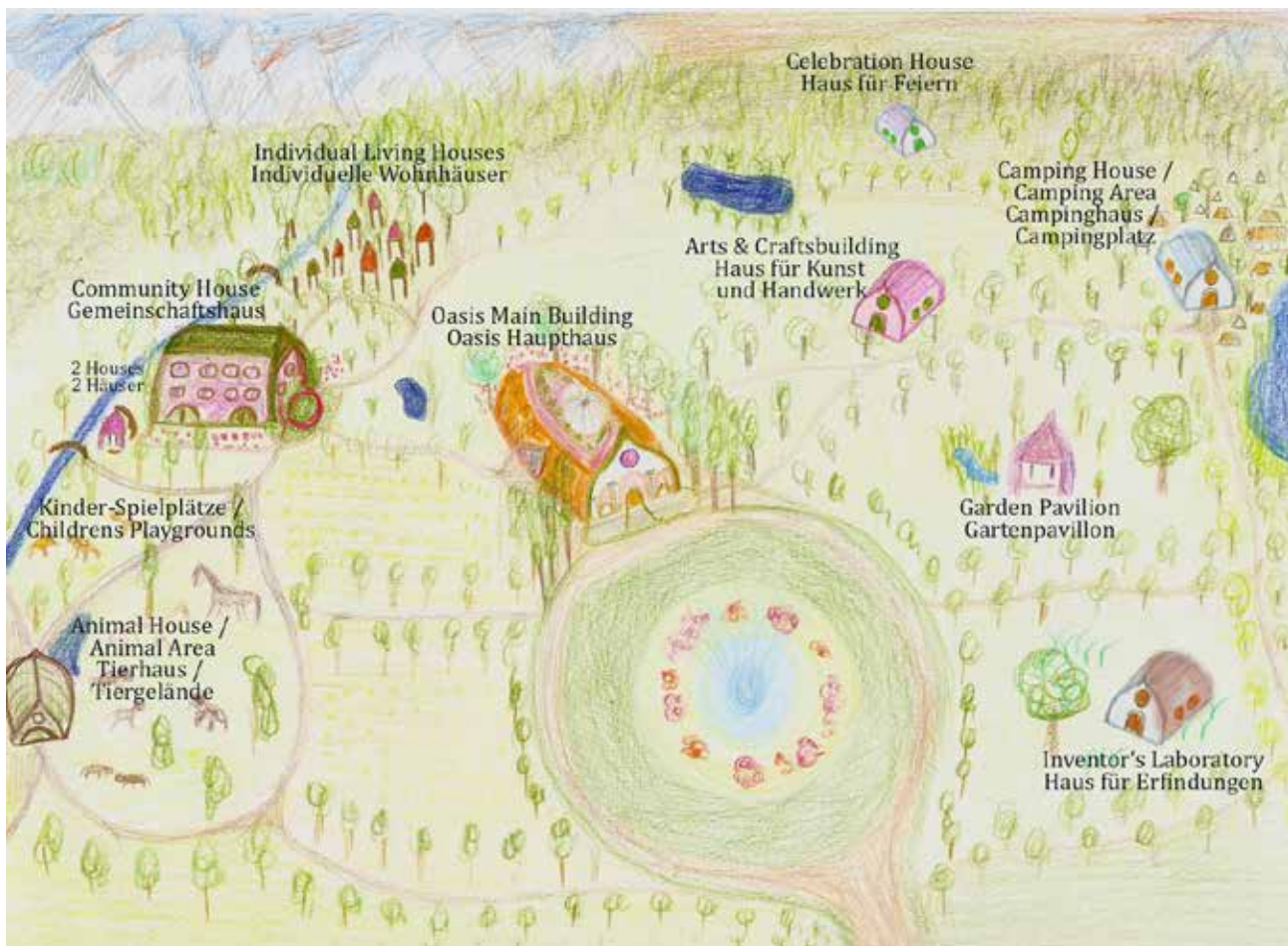
*Update No. 3: First Model Main Building  
Wolfgang Schrader, May 2015*







## Update No. 4: Extensions Oasis Grounds Anja Schäfer, June 2016



*Oasis Grounds with extensions*

During the Oasis meetings and mutual visualizations, some new houses and areas emerged:

- A playground for different ages close to the animal area
- A separate area for horses and therapeutic work with horses and humans.
- A house for inventions and development of new technologies. Inventor's laboratory.
- A Celebration House with stage.
- An Arts- and Craftsbuilding for creative work and exhibitions.
- A garden area for fairies and elves as an invitation for nature beings (respectful interaction, walking only on signposted paths).
- A second living house connected with the community house by a roof bridge.
- The individual living houses in the rear part of the Oasis area vary in their looks and sizes.